

Bassi

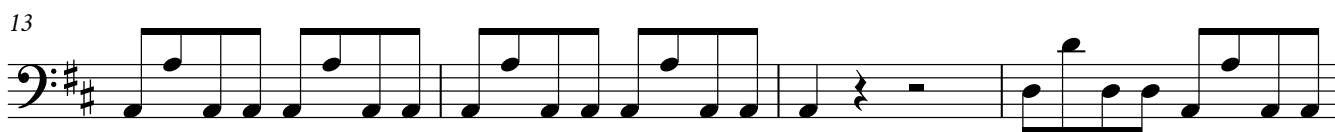
Gloria

Antonio Vivaldi

RV 589

1. Gloria

Allegro



p



f



2. Et in terra pax hominibus

Andante



6



11



16



21



26



31



36



41



46



93



103



113



120



4. Gratias agimus tibi

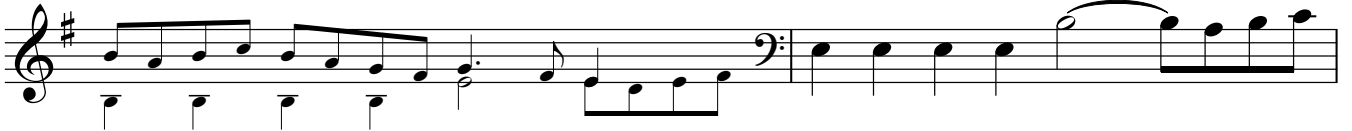
Adagio



7 Allegro [♩=♩]



9



11



13



15



18

A musical staff in bass clef with a key signature of one sharp (F#) and a common time signature. The measure contains a series of eighth notes: F#4, G4, A4, B4, C5, D5, E5, F#5, G5, A5, B5, C6.

21

A musical staff in bass clef with a key signature of one sharp (F#) and a common time signature. The measure contains a series of eighth notes: F#4, G4, A4, B4, C5, D5, E5, F#5, G5, A5, B5, C6. The staff ends with a double bar line and repeat signs.

5. Domine Deus, Rex cœlestis

Largo

A musical staff in bass clef with a key signature of one sharp (F#) and a 12/8 time signature. The measure contains a series of eighth notes: F#4, G4, A4, B4, C5, D5, E5, F#5, G5, A5, B5, C6.

4

A musical staff in bass clef with a key signature of one sharp (F#) and a common time signature. The measure contains a series of eighth notes: F#4, G4, A4, B4, C5, D5, E5, F#5, G5, A5, B5, C6.

7

A musical staff in bass clef with a key signature of one sharp (F#) and a common time signature. The measure contains a series of eighth notes: F#4, G4, A4, B4, C5, D5, E5, F#5, G5, A5, B5, C6.

10

A musical staff in bass clef with a key signature of one sharp (F#) and a common time signature. The measure contains a series of eighth notes: F#4, G4, A4, B4, C5, D5, E5, F#5, G5, A5, B5, C6.

13

A musical staff in bass clef with a key signature of one sharp (F#) and a common time signature. The measure contains a series of eighth notes: F#4, G4, A4, B4, C5, D5, E5, F#5, G5, A5, B5, C6.

16

A musical staff in bass clef with a key signature of one sharp (F#) and a common time signature. The measure contains a series of eighth notes: F#4, G4, A4, B4, C5, D5, E5, F#5, G5, A5, B5, C6.

19

A musical staff in bass clef with a key signature of one sharp (F#) and a common time signature. The measure contains a series of eighth notes: F#4, G4, A4, B4, C5, D5, E5, F#5, G5, A5, B5, C6.

22

A musical staff in bass clef with a key signature of one sharp (F#) and a common time signature. The measure contains a series of eighth notes: F#4, G4, A4, B4, C5, D5, E5, F#5, G5, A5, B5, C6.

6. Domine Fili unigenite

Allegro



6



12



18



23



29



34



39



44



49



54



59



64



70



75



80



85



90

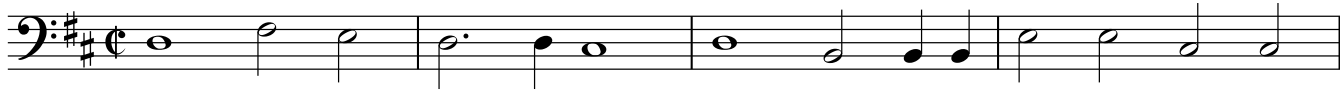


94



11. Cum Sancto Spiritu

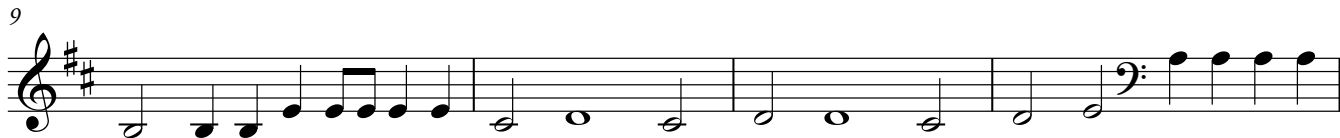
Allegro



5



9



13



17



21



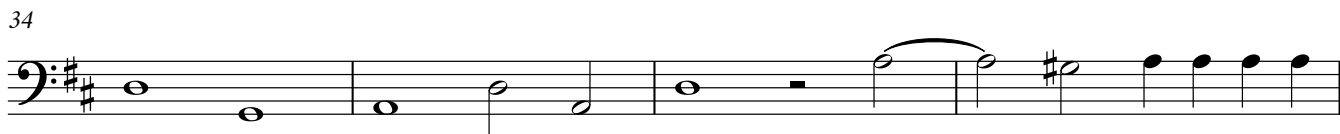
25



30



34



38



42



46



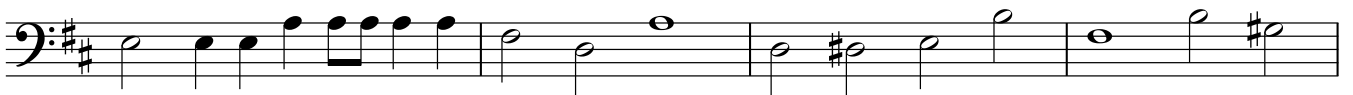
50



54



59



63



68



72



75

